



goDCgo
powered by d.

Plan Ahead for WMATA's Platform Improvement Project

You've got options and goDCgo can help.

Photo courtesy of WMATA

GREEN / YELLOW LINE STATION CLOSURES TOOLKIT FOR EMPLOYERS

Brought to you by goDCgo

WHAT IS goDCgo?

goDCgo is an initiative of the District Department of Transportation (DDOT) that encourages the use of sustainable transportation. Our award-winning Employer Services team provides complimentary consultations to businesses starting or enhancing a commuter benefits program, making it easier for your employees to choose sustainable, affordable, and healthy ways to get to work.

WHAT IS THE PLATFORM IMPROVEMENT PROJECT?

During summer 2021, the Washington Metropolitan Area Transportation Association (WMATA) will repair and reconstruct platforms at four stations on the Green/Yellow Line: Greenbelt, College Park-U of Md, Prince George's Plaza, and West Hyattsville. Starting Saturday, May 29 to Monday, September, 6, 2021 there will be no Green/Yellow Line service north of Fort Totten. Green Line trains will operate between Branch Ave and Fort Totten. Yellow Line trains will operate between Huntington and Mt Vernon Square. During this time, free shuttle bus service will be available. The station closures are part of Metro's three-year Platform Improvement Project (PIP) that will completely reconstruct the outdoor platforms at 20 Metrorail stations, making platforms safer and more accessible for customers with disabilities, while also addressing safety concerns and longstanding structural issues.

To best handle the station closures, employers and commuters should prepare and educate themselves by knowing their transportation options. goDCgo's [online interactive map](#) provides individual trip planning to help plan the quickest and most affordable route to work.

UPCOMING METRO SERVICE DISRUPTIONS

NO METRORAIL SERVICE

DATES AND LINE IMPACT AREAS

May 29 to September 6, 2021

GR **YL** Green / Yellow: Greenbelt to West Hyattsville



For more information, visit wmata.com/platforms

Riders are encouraged to sign up for MetroAlerts to receive updates about service disruptions by text or email.

TRANSPORTATION OPTIONS



TELEWORK

By establishing a **telework policy during the Platform Improvement Project (PIP)**, your employees will be able to skip the commute altogether and maximize productivity while allowing for business continuity and a socially distant work environment. Your telework arrangement depends on your company needs, and goDCgo can help revamp or implement a telework program that works for both the employer and employee.

By defining terms and specifying and generating an agreement, all parties involved will know what to expect during a telework period.

Interested in additional information or establishing a custom PIP telework plan? Contact goDCgo at 202-299-2186 or info@goDCgo.com.



FLEXIBLE SCHEDULE

Instead of requiring employees to report to work during standard hours, **employees can avoid peak commute hours by implementing flexible work options.**

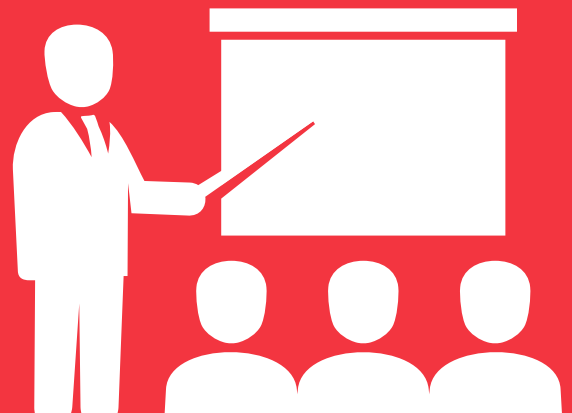
goDCgo encourages businesses to consider non-traditional flexible schedule options by allowing employees to arrive or leave work at different times; or developing staggered scheduling shifts to help employees avoid rush-hour traffic congestion and transit overcrowding.

goDCgo can help define, revamp, or implement a flexible scheduling policy during PIP. Call 202-299-2186 or email info@goDCgo.com.

EDUCATE YOUR EMPLOYEES

goDCgo will host **virtual presentations** upon request. During the presentations, attendees will learn about the changes and updates being made to Metrorail and receive valuable information about available transportation options.

If you're interested in inviting goDCgo to speak to your employees about PIP transportation options, please complete the form at platforms.goDCgo.com or email info@goDCgo.com.



TRANSPORTATION OPTIONS



OPTIONS TO/FROM METRORAIL

SHUTTLES

The following shuttles will operate Monday through Friday from 5am to 11pm; Saturday from 7am to 11pm; and Sunday from 8am to 11pm.

- » Limited-stop service between Greenbelt, College Park-U of Md, and Fort Totten operates every 6-10 minutes.
- » Limited-stop service between Prince George's Plaza, West Hyattsville, and Fort Totten operates every 6-10 minutes.
- » Local service between Greenbelt, College Park-U of Md, Prince George's Plaza, and West Hyattsville operates every 15 minutes.

Free Shuttle Bus Service

Effective: May 29–September 6, 2021

LIMITED-STOP SERVICE

Greenbelt-Fort Totten

Between **Greenbelt**, **College Park-U of Md** & **Fort Totten**

Prince George's Plaza-Fort Totten

Between **Prince George's Plaza**, **West Hyattsville** & **Fort Totten**

LOCAL SERVICE

Greenbelt-West Hyattsville

Between **Greenbelt**, **College Park-U of Md**, **Prince George's Plaza** & **West Hyattsville**

Does not serve Fort Totten



 No  service north of Fort Totten

 No  service north of Mt Vernon Sq

 Transfer station

 Station closed

TRANSPORTATION OPTIONS

CONVENIENT BUS OPTIONS - REGULAR FARES APPLY

BUS

**Please note that all passengers are required to properly wear a face mask or covering for the duration of their trip(s).*

METROBUS provides multiple routes that connect District and Maryland residents to nearby Metrorail stations. Fares start at \$2, cash or SmarTrip® card, or download the SmarTrip® app for a contactless way to pay.

Greenbelt

- » G12 & G14 – Service to New Carrollton Station
- » R12 – Service to College Park-U of Md & Deanwood stations

College Park-U of Md

- » 83 – Service to Rhode Island Ave Station
- » 86 – Service to Prince George's Plaza & Rhode Island Ave stations
- » F6 – Service to New Carrollton, Prince George's Plaza, West Hyattsville & Fort Totten stations
- » R12 – Service to College Park-U of Md & Deanwood stations

Prince George's Plaza

- » 86 – Service to Prince George's Plaza & Rhode Island Ave stations
- » F4 – Service to Silver Spring & New Carrollton stations
- » F6 – Service to New Carrollton, Prince George's Plaza, West Hyattsville & Fort Totten stations
- » F8 – Service to West Hyattsville & Cheverly stations
- » R4 – Service to West Hyattsville & Brookland stations

West Hyattsville

- » F1 & F2 – Service to Takoma & Cheverly stations
- » F6 – Service to New Carrollton, Prince George's Plaza, West Hyattsville & Fort Totten stations
- » F8 – Service to West Hyattsville & Cheverly stations
- » R4 – Service to West Hyattsville & Brookland stations

THE BUS system operates Monday through Friday only. Fare is \$1.25 for adults, cash or SmarTrip® card. Fare is FREE for seniors, people with disabilities, youth ages 5-18, and Medicare participants.

Greenbelt

- » 16 – Service to New Carrollton Station

Prince George's Plaza

- » 13 – Service to West Hyattsville station
- » 18 – Service to Addison Rd station

West Hyattsville

- » 13 – Service to West Hyattsville station



TRANSPORTATION OPTIONS



OPTIONS TO/FROM DC

BIKING

CAPITAL BIKESHARE rates start at \$2 for a 30 minute trip. With 6,000 bikes and over 600 stations across the DC metro area, Capital Bikeshare is an easy and low cost way to navigate station closures and connect to the nearest open Metrorail stations.

- » **Prince George's Plaza** - Prince George's Plaza Metro, The Mall at Prince George's
- » **West Hyattsville** - Hyattsville Metro

Use a personal bike to get to your nearest open Metrorail station where secure bike parking is available. You can also bring your bike on board the Metrorail at any time.

SCOOTERS AND DOCKLESS BIKES are currently available in the District and certain counties in Maryland. Scooters and dockless bikes can easily be located and unlocked using the provider's mobile app.

- » **Washington, DC** – Bird, Helbiz, Jump, Lime, Lyft, Razor, Skip, Spin

**For more information about scooters in the District, visit godcgo.com/scooter.*

WASHINGTON AREA BICYCLISTS ASSOCIATION (WABA) offers courses for bicyclists of all skill levels to help adults ride more comfortably and confidently. All Capital Bikeshare members can access WABA classes for free.

RAIL

- » **MARC** – The Camden-Washington route services stops at Greenbelt and College Park, making a final stop at Union Station.

TRANSPORTATION OPTIONS



TRAILS

There are several trails connecting DC to Maryland, but Paint Branch Trail and the Trolley Trail are highly accessible options from PG County. Paint Branch Trail runs for 3.5 miles between Lake Artemesia and the Cherry Hill Neighborhood Park in College Park, MD. The trail is a part of the larger Anacostia Tributary Trail System, which provides miles of off-road paved paths along the various branches of the Anacostia River.

The Trolley Trail follows the route of the old trolley train that once ran from DC to Laurel, MD. Running along Rhode Island Avenue, it is now a widely used 3.8-mile hiker/biker pathway towards the District. The Trolley Trail also connects to multiple other walking or bicycling trails, including the Indian Creek Trail and the Paint Branch Trail. Learn more at godcgo.com/bike.



RIDESHARING

Commuter Connections' Ridematching program will match commuters with a carpool or vanpool – reducing road congestion and freeing up parking.

commuterconnections.org

uberPOOL, Lyft Line, and Via allow commuters to share the ride with others in the same direction and pay less for your trip. Grab a ride using the provider's mobile app.*

**Please be advised that shared rides may be temporarily paused due to the coronavirus (COVID-19) pandemic.*

Waze Carpool is a mobile app that connects commuters going the same way in Maryland and DC.

Taxis can be easily located and hailed around the PG County area with 24-hour dispatch service.

CUSTOMIZED PIP TOOLS





GET AROUND GUIDE

Your employees have many options for getting to work and moving about during the Platform Improvement Project. Help them choose sustainable, cost-effective, stress-free modes with tools that are customized for your company's location.

Upon request, goDCgo can provide your company with a custom **Get Around Guide** sharing all nearby transportation options accessible from your physical address. **Contact goDCgo at 202-299-2186 or info@goDCgo.com.**

SOCIAL MEDIA POSTS

Want to share transportation options with your clients and customers? **Simply copy and paste the examples below into your social networks and post!**

-  Don't let Metro's Green/Yellow Line shutdown derail your travels! You can still access our location by bus, bike, foot, scooter, or rideshare! Find your alternative transportation options at platforms.godcgo.com.
-  Has your commute been impacted by the Green/Yellow Line shutdown? Confidently tackle a new route with safe, alternative transportation options at platforms.godcgo.com.
-  Hey, PG County Commuters! Our location is still open during @wmata's summer Green/Yellow Line shutdown. Learn about your alternative transportation options at platforms.godcgo.com.
-  Metro may be under repair, but we're not! Come visit us at {your address}. Get your transportation options at platforms.godcgo.com.

TRANSIT APPS



CITYMAPPER

Integrate all public transit in DC and get real-time options for getting from point A to B.



DC METRO & BUS

Real-time Metrorail and Metrobus predictions for planning trips in DC, MD, or VA.



GOOGLE MAPS

View maps and plan a trip by transit, walking, biking (or driving).



DC METRO TRANSIT

Real-time predictions for the DC Metrorail, Metro Bus, Circulator, and more.



TRANSIT

Plan your trip, set reminders, and get notifications about disruptions.



TRIPGO

Get around DC in either the cheapest, quickest, or most eco-friendly way possible.



WAZE

Navigate your driving route with peer recommendations on detours and road troubles.



CAPITAL BIKESHARE

Download the app for current bike and station availability. Users can also access bikes and ride stats within app.



CITYMOTION

Get real-time information for all your mobility options anywhere and everywhere you go.

EMPLOYEE OUTREACH EMAIL

Educate staff on their transportation options, resources, and tools to create a sustainable and smooth commute. **Copy and paste the below message to compose an all-staff email!**

Dear Employees,

Beginning Saturday, May 29 to Monday, September 6, WMATA's Metrorail will repair and reconstruct platforms at four stations on the Green/Yellow Line: Greenbelt, College Park-U of Md, Prince George's Plaza, and West Hyattsville. As a result, there will be NO Green/Yellow Line service north of Fort Totten station during this time.

The DC metro area is home to a variety of safe, sustainable transportation options that will help you arrive to work. We encourage staff to research options before the platform work begins. goDCgo, an initiative of the District Department of Transportation (DDOT), is at the forefront of providing alternative options and your #1 transportation resource during Metrorail closures. We urge you to utilize the following resources:

- Visit **wmata.com/Platforms** for details regarding the Metro disruptions and transportation options.
- Download a **helpful transit app** to view schedules and route your trip.
- Attend a **free Platform Improvement Project workshop** at our company. *Details to follow.*

Our department is available to assist you with questions regarding your commute options and our company policies. Please contact {name} at {contact information} for further details.

We look forward to your commute-warrior success stories!

Sincerely,

{your name}

{your title}

{your contact information}

RESOURCES

It's important that your employees know about scheduled PIP maintenance. As the project continues, **goDCgo will expand resources to provide you with the most updated and helpful information.**



METROALERTS

Free alert service that delivers Metro information to your desktop or mobile device.



MARC

The Maryland Area Regional Commuter Rail (MARC) is comprised of three lines in the Baltimore-Washington, DC metro area all originating and ending at Union Station in Washington, DC.



GODCGO

**202-299-2186,
info@goDCgo.com,
platforms.godcgo.com**

goDCgo, a program of the District Department of Transportation (DDOT), provides complimentary support to employers starting or enhancing a commuter benefits program.



DISTRICT DEPARTMENT OF TRANSPORTATION (DDOT) (202) 671-2700, ddot.dc.gov

The District Department of Transportation (DDOT) manages and maintains publicly owned transportation infrastructure in the District and ensures people, goods, and information move efficiently and safely.



WASHINGTON METROPOLITAN AREA TRANSIT AUTHORITY (WMATA) 202-637-7000, wmata.com/platforms

The station closures are part of Metro's three-year Platform Improvement Project that will completely reconstruct the outdoor platforms at 20 Metrorail stations, making platforms safer and more accessible for customers with disabilities, while also addressing safety concerns and longstanding structural issues.



COMMUTER CONNECTIONS 1-800-745-RIDE (7433), commuterconnections.org

Commuter Connections provides ride-matching services for individuals wishing to join a carpool or vanpool and administers the region's free Guaranteed Ride Home.



MARYLAND TRANSIT AUTHORITY (MTA) 410-539-5000, mta.maryland.gov

The Maryland Transit Administration (MTA) is a division of the Maryland Department of Transportation (MDOT), and one of the largest multi-modal transit systems in the US. Their mission is to provide safe, efficient, and reliable transit across Maryland with world-class customer service.